



Jardin Botanique
de Bordeaux



Oïkos
club FPF 14-2145



Licence GPU
L180121-M3G,2S,2B



Patronage FPF
2018-24

Jardin Botanique de Bordeaux et Oïkos

12^e Salon international « Photo-phyllles » - 2018

General theme:

Plants, fungi and myxomycetes

The photographs submitted must have as their main subject one or more of the following elements, natural, cultivated or transformed by human action:

- plants and trees
- mosses and lichens
- algae
- fungi and moulds
- myxomycetes

Calendar

Deadline: October 26, 2018

Judgement: November 3-4 (A) and 10-11 (B)

Notifications sent: November 18

Exhibition in the Botanical Garden of Bordeaux: December 4, 2018 – March 3, 2019

Catalogue published online: February 28, 2019

Organizers

Philippe RICHARD
Dominique VIVENT
Contact: Jardin Botanique
Esplanade Linné
33100 BORDEAUX
Tél. : (33)5 56 52 18 77

Email:
photophylles@gmail.com
Website:
www.jjmphoto.fr

Salon Chairman
Jean-Jacques MILAN, E.FIAP
29 rue Montaigne
33170 GRADIGNAN
Tél. : (33)5 56 89 26 77

1. Participants:

The Salon is open to everyone, except the organizers.

2. Sections:

▶▶▶ A - Colours:

wild life only

Photographs must comply with the FIAP definition of wildlife: **non-cultivated species of plants, fungi or myxomycetes that grow freely in a natural or adopted environment.** These photographs can also depict **the interactions between these species and other natural elements** such as insects, birds, mammals, moulds, weather events...

▶▶▶ B - Monochrome or colours:

plants, mushrooms... and man

Agricultural landscapes, cultivated plants, presence of human elements, natural or processed plants used for decoration, food, clothing, construction, leisure....

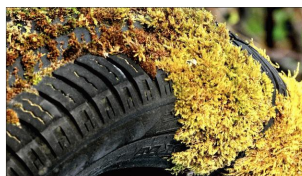
Examples of eligible photographs in **section A**



Janos DANIS



Ana EWERT



Alain LAMOTHE



Mari HANNI

Examples of eligible photographs in **section B**



Luis Alberto FRANKE

monochrome



Michel PLANTE



Boris SONTACCHI



Anna GARRIGOU

3. Number of photographs and sending:

- Each author can submit up to **8 photos, divided between the two sections at will.**
- Photos and packing slip must be sent online

Follow the instructions on this site: <https://www.jjmphoto.fr/>

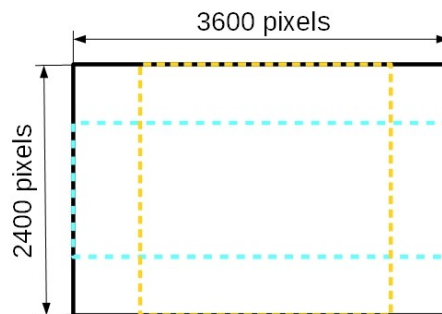
- Be careful, authors must use only the Latin alphabet when sending their participation, the download platform does not accept national characters.

4. Exhibition:

The photos selected for the exhibition will be printed in high quality at the expense of the organizers. Photos that are too low in resolution will not be exposed, even if they have been accepted.

5. Presentation:

- JPEG files only.
- If possible, at least 3,600 pixels for the longest side and/or 2,400 for the smallest.
Black: 3/2 - Yellow: square - Blue: panoramic
It is useless to reduce your photos unless they exceed the permissible "weight".
- Maximum 8 MB per photo.
- No border



6. File names:

- The files will be renamed automatically but you must give a title to each photograph at the time of sending (45 characters maximum).
This title will be used as it is for the exhibition and catalogue.
- If **properly verified**, the scientific names of the represented species are highly desirable.

7. Comments:

- The Bordeaux Botanical Garden is firstly an educational institution. All the photos on display are accompanied by an explanatory text.
- **For this reason, we ask you to attach to your submission, in free text (.doc, .odt, .txt...), a description as complete as possible of your photos: date and place of shooting, technical data, description and particularities of the subjects represented, etc.**
- This information will also be useful when writing the various parts of the catalogue, or if necessary to inform the members of the jury.

8. Awards:

The best entries (authors and photos) will be rewarded with medals and honourable mentions, the youth prize, the jury prizes, the Bordeaux City Prize, etc.

9. Catalogue:

The catalogue in PDF format will be available online.

10. Entry fees:

- 4 € per author
- 15 € per group entry regardless of the number of authors
- **FREE for young people** (under 21 in 2018)
- The choice of payment methods is made online on the photo upload platform.

11. Clauses of use:

- Unless prohibited in writing by the authors, the photos may be reproduced in the catalogue or for advertising purposes to the Photo-phylls Salon. The prints will remain available for other exhibitions as part of the Botanical Garden's activities.
- The photographs presented at the Salon will not be used for any commercial purpose. Visitors wishing to acquire a photo will be put in direct contact with its author, the organizers will not be involved in any possible transaction.
- The organizers decline any responsibility if compelling reasons would oblige to cancel the event.

12. Jury:

Section A	Section B
<p>Jonas BANIAKINA (Jardin Botanique de Bordeaux)</p> <p>Michèle DUPAIN (Société linnéenne de Bordeaux)</p> <p>Christophe MONFERRAND (Société linnéenne de Bordeaux)</p> <p>Alternate: Sylvie NIOLLET (Photo-Club de Léognan)</p>	<p>Jacques ADIDA E.FIAP (Photo-Club du Bassin d'Arcachon)</p> <p>Chantal SIGNORET-DUSSUTOUR (Aquitaine Images)</p> <p>Michel SOURBÉ A.FIAP (Photo-Club de Mimizan)</p> <p>Alternate: Dominique LÈGERON (Photo-Club du Val de l'Eyre)</p>

13. Definition of nature photography:

Nature photography is restricted to the use of the photographic process to depict all branches of natural history, except anthropology and archeology, in such a fashion that a well-informed person will be able to identify the subject material and certify its honest presentation. The story telling value of a photograph must be weighed more than the pictorial quality while maintaining high technical quality. Human elements shall not be present, except where those human elements are integral parts of the nature story such as nature subjects, like barn owls or storks, adapted to an environment modified by humans, or where those human elements are in situations depicting natural forces, like hurricanes or tidal waves. Scientific bands, scientific tags or radio collars on wild animals are permissible. Photographs of human created hybrid plants, cultivated plants, feral animals, domestic animals, or mounted specimens are ineligible, as is any form of manipulation that alters the truth of the photographic statement.

No techniques that add, relocate, replace, or remove pictorial elements except by cropping are permitted. Techniques that enhance the presentation of the photograph without changing the nature story or the pictorial content, or without altering the content of the original scene, are permitted including HDR, focus stacking and dodging/burning. Techniques that remove elements added by the camera, such as dust spots, digital noise, and film scratches, are allowed. Stitched images are not permitted. All allowed adjustments must appear natural. Color images can be converted to greyscale monochrome. Infrared images, either direct-captures or derivations, are not allowed.

Images used in Nature Photography competitions may be divided in two classes: Nature and Wildlife. Images entered in Nature sections meeting the Nature Photography Definition above can have landscapes, geologic formations, weather phenomena, and extant organisms as the primary subject matter. This includes images taken with the subjects in controlled conditions, such as zoos, game farms, botanical gardens, aquariums and any enclosure where the subjects are totally dependent on man for food.

Images entered in Wildlife sections meeting the Nature Photography Definition above are further defined as one or more extant zoological or botanical organisms free and unrestrained in a natural or adopted habitat. Landscapes, geologic formations, photographs of zoo or game farm animals, or of any extant zoological or botanical species taken under controlled conditions are not eligible in Wildlife sections. Wildlife is not limited to animals, birds and insects. Marine subjects and botanical subjects (including fungi and algae) taken in the wild are suitable wildlife subjects, as are carcasses of existing species. Wildlife images may be entered in Nature sections of Exhibitions.